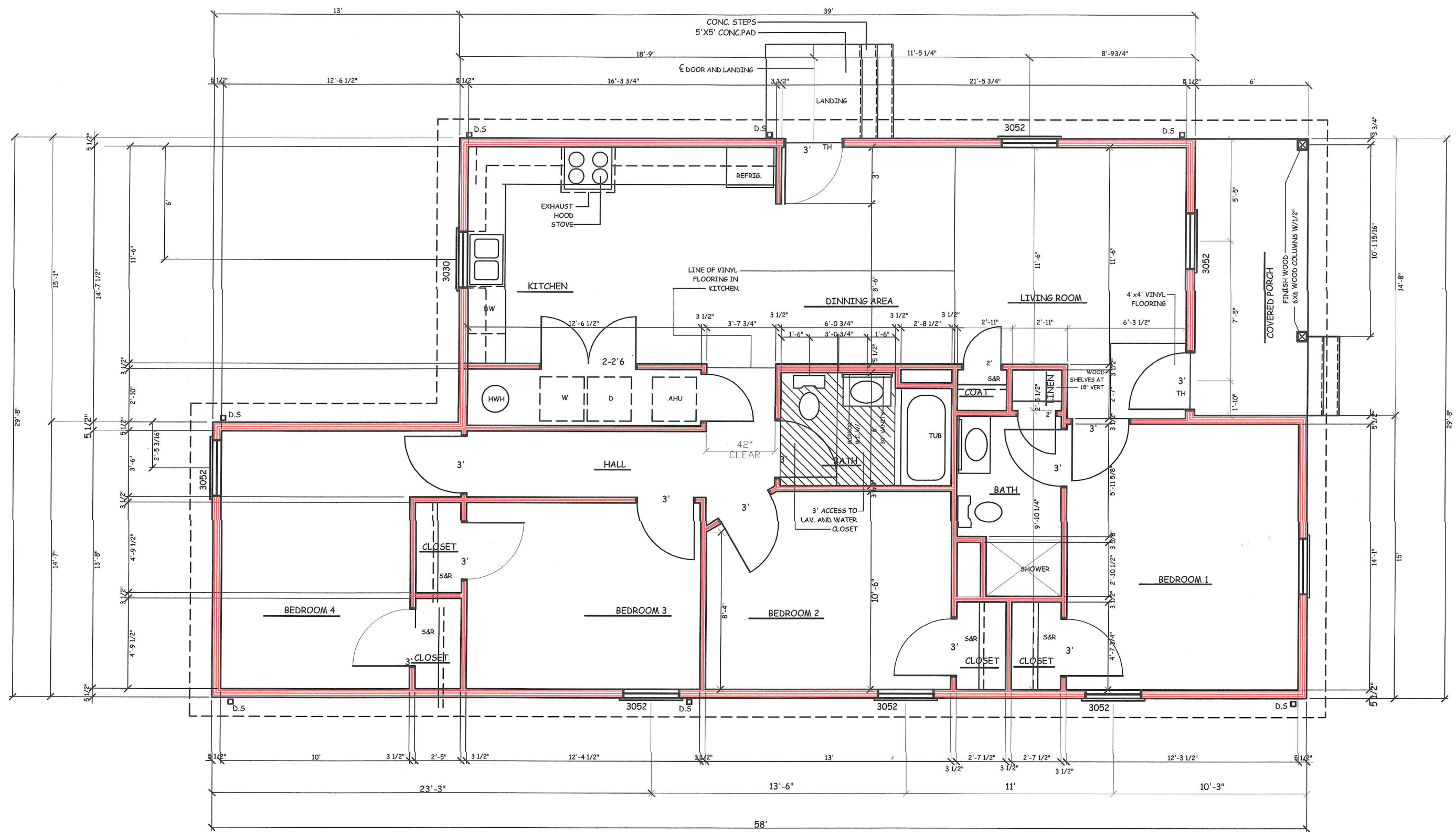


DATE:	06.06.16
REVISED:	06.13.16
REVISED:	
REVISED:	
DRAWN BY:	RCB
JOB NO:	1439-REV



FLOOR PLAN

SCALE: 3/16" = 1'-0"

FLOOR PLAN NOTES:

- STUD WALLS 2X6 (5-1/2") @16" OR 24" O.C.
- PLUMBING WALLS 2X6 (5-1/2") @16" O.C.
- FINISHED CEILING 8'-0" A.F.F.
- LOAD BEARING HEADERS
- (2) 2X10 W/ 1/2" PLYWOOD AND 2X4 BASE MIN.
- DIMENSIONS TAKEN FROM FACE OF STUDS OR FOUNDATION
- ALL DOORS STANDARD HEIGHT UNLESS NOTES
- EXTERIOR DOORS TO HAVE EXTENDED JAMBS DESIGNED FOR 2X6 WALLS

RANDALL C. BURCHETT & ASSOCIATES
 ARCHITECT
 322 WEST COURT ST. PRESTONSBURG, KENTUCKY 41653
 PH. 606.666.3929 FAX. 606.666.0289



KRISS LOWRY & ASSOCIATES
 KL-1439-REV
 CORINTH, KY

SHEET NUMBER

A7

DATE:	06.04.16
REVISED:	06.13.16
REVISED:	
REVISED:	
DRAWN BY:	RCB
JOB NO:	439ES-REV

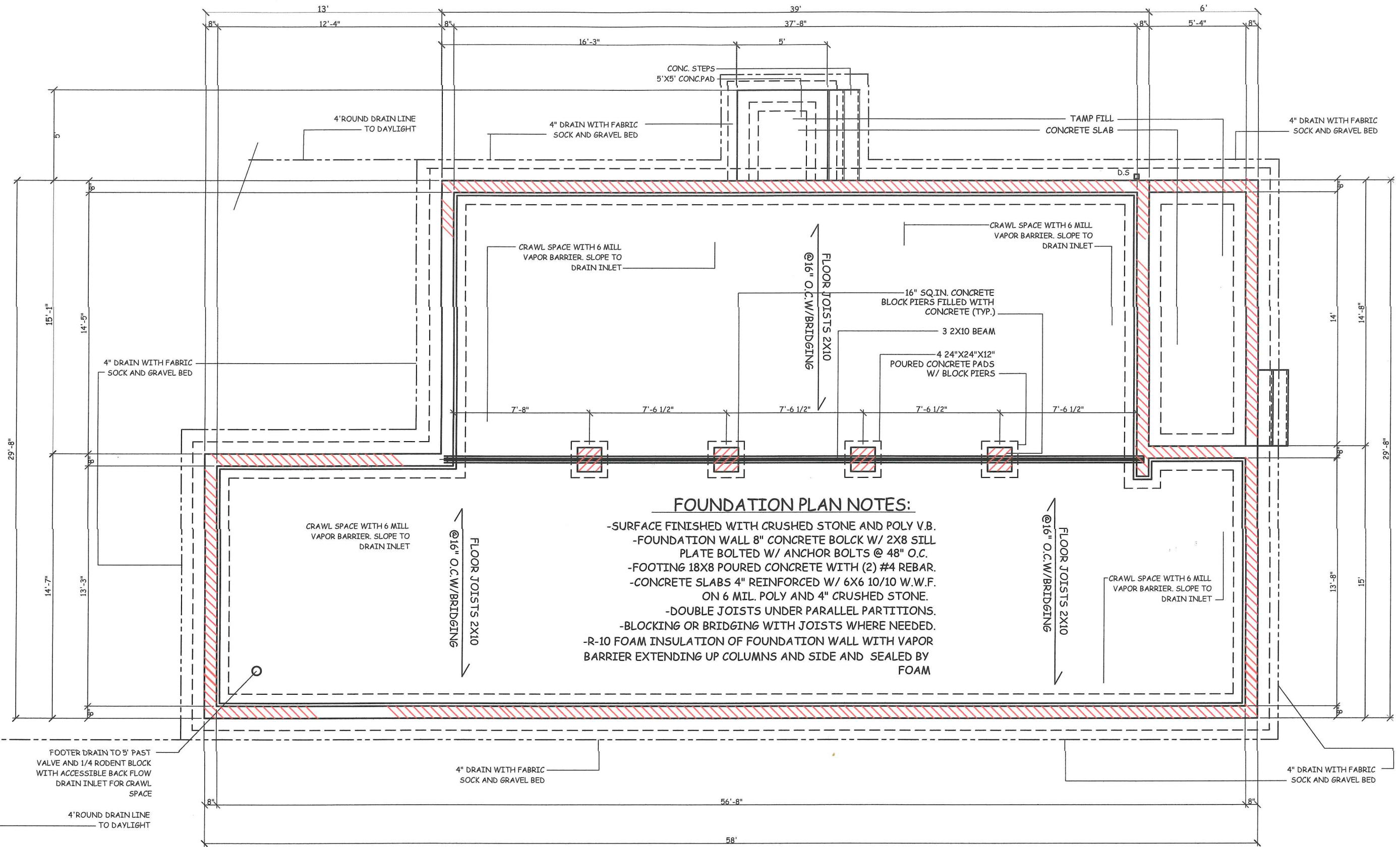
RANDALL C. BURCHETT & ASSOCIATES
 ARCHITECT
 322 WEST COURT ST. PRESTONSBURG, KENTUCKY 41663
 PH. 606.886.3929 FAX. 606.886.0289



KRISS LOWRY & ASSOCIATES
 KL-1439ES-REV
 CORINTH, KY

SHEET NUMBER

A2

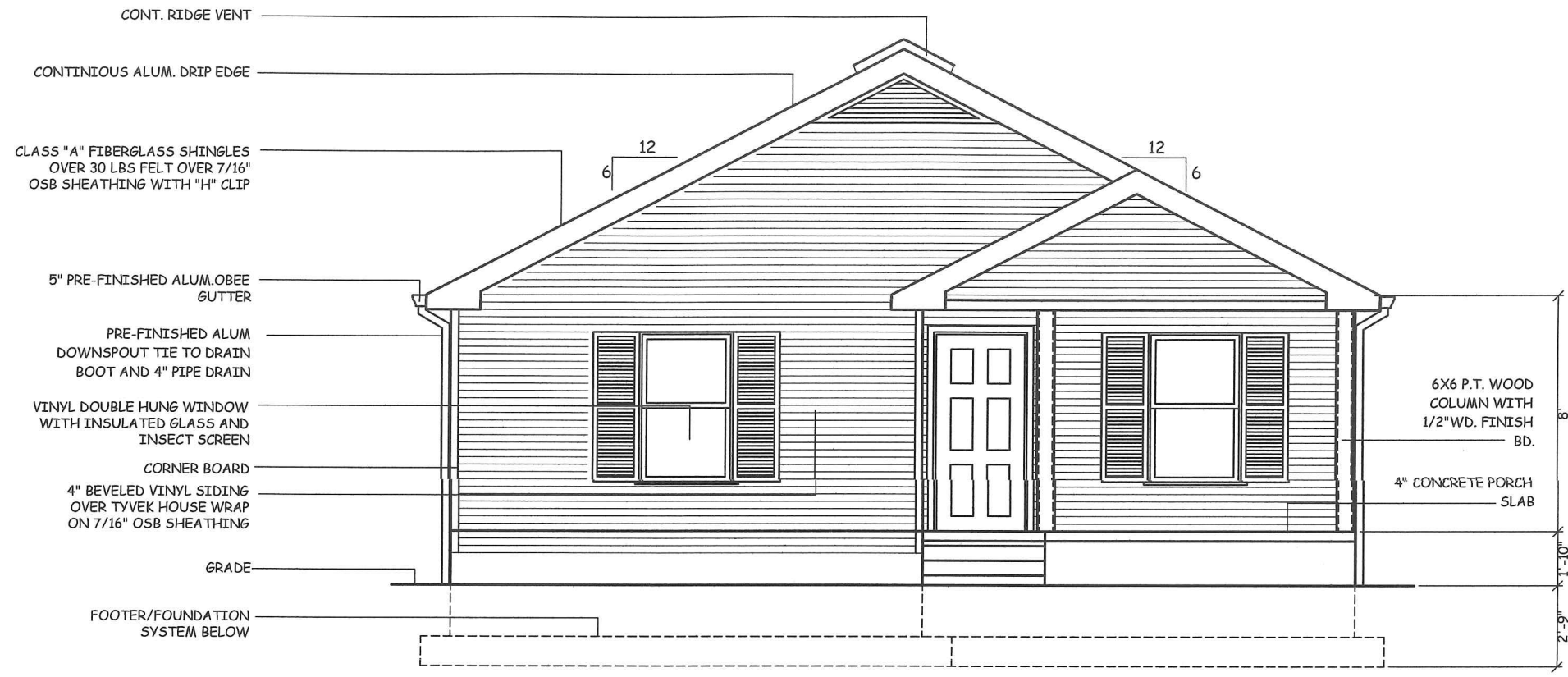


FOUNDATION PLAN NOTES:

- SURFACE FINISHED WITH CRUSHED STONE AND POLY V.B.
- FOUNDATION WALL 8" CONCRETE BOLCK W/ 2X8 SILL PLATE BOLTED W/ ANCHOR BOLTS @ 48" O.C.
- FOOTING 18X8 POURED CONCRETE WITH (2) #4 REBAR.
- CONCRETE SLABS 4" REINFORCED W/ 6X6 10/10 W.W.F. ON 6 MIL. POLY AND 4" CRUSHED STONE.
- DOUBLE JOISTS UNDER PARALLEL PARTITIONS.
- BLOCKING OR BRIDGING WITH JOISTS WHERE NEEDED.
- R-10 FOAM INSULATION OF FOUNDATION WALL WITH VAPOR BARRIER EXTENDING UP COLUMNS AND SIDE AND SEALED BY FOAM

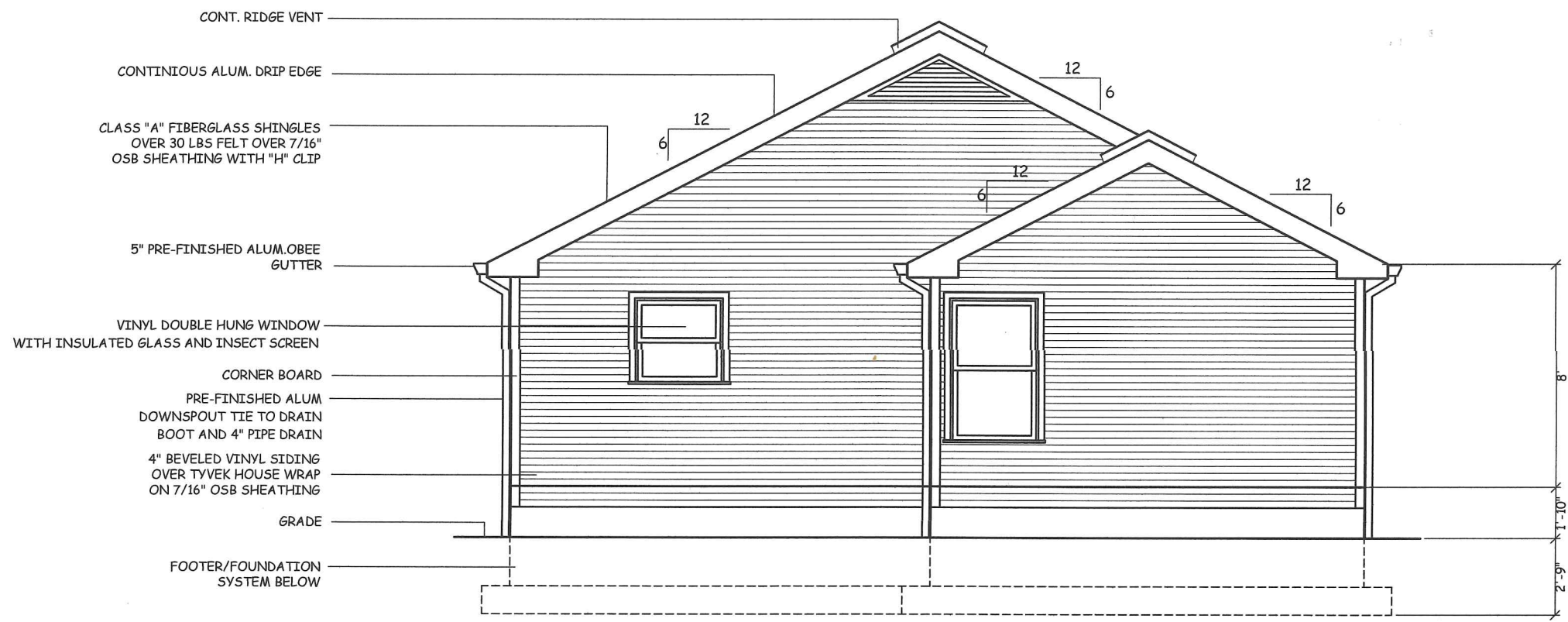
FOUNDATION PLAN

DATE:	06.04.16
REVISED:	06.13.16
REVISED:	
REVISED:	
DRAWN BY:	RCB
JOB NO:	1439ES-REV



FRONT ELEVATION

SCALE: 3/16" = 1'-0"



REAR ELEVATION

SCALE: 3/16" = 1'-0"

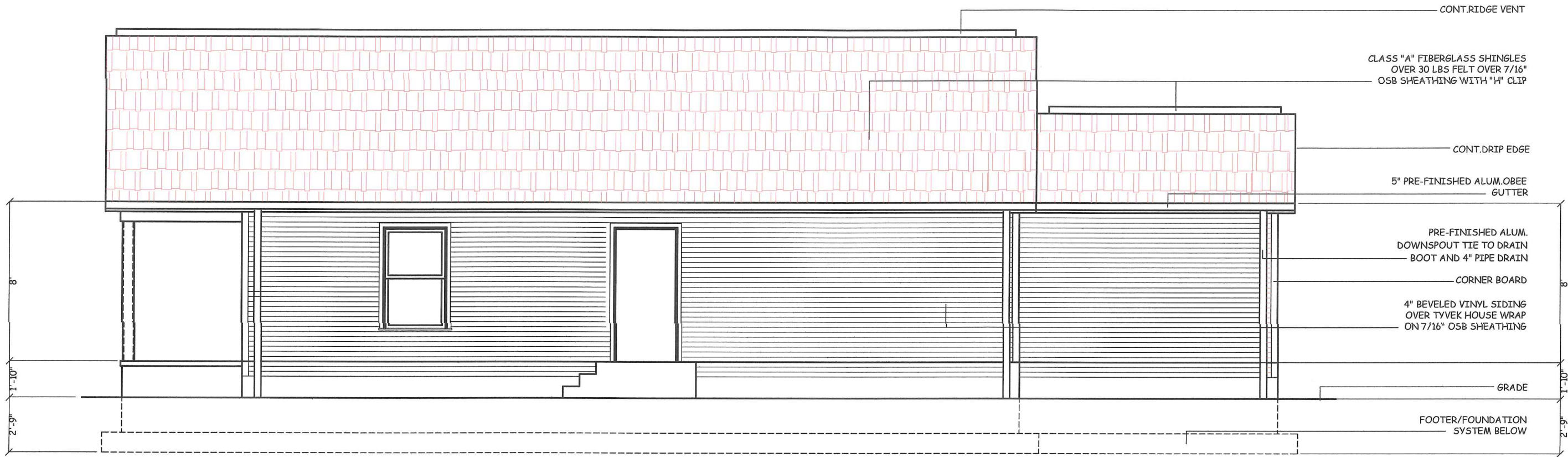
RANDALL C. BURCHETT & ASSOCIATES
 ARCHITECT
 322 WEST COURT ST. PRESTONSBURG, KENTUCKY 41653
 PH. 606.686.3929 FAX. 606.686.0289

KRISS LOWRY & ASSOCIATES
 KL-1439ES-REV
 CORINTH, KY

SHEET NUMBER

A3

DATE:	06.04.16
REVISED:	06.13.16
REVISED:	
REVISED:	
DRAWN BY:	RCB
JOB NO:	1439-REV



CONT.RIDGE VENT

CLASS "A" FIBERGLASS SHINGLES
OVER 30 LBS FELT OVER 7/16"
OSB SHEATHING WITH "H" CLIP

CONT.DRIP EDGE

5" PRE-FINISHED ALUM.OBEE
GUTTER

PRE-FINISHED ALUM.
DOWNSPOUT TIE TO DRAIN
BOOT AND 4" PIPE DRAIN

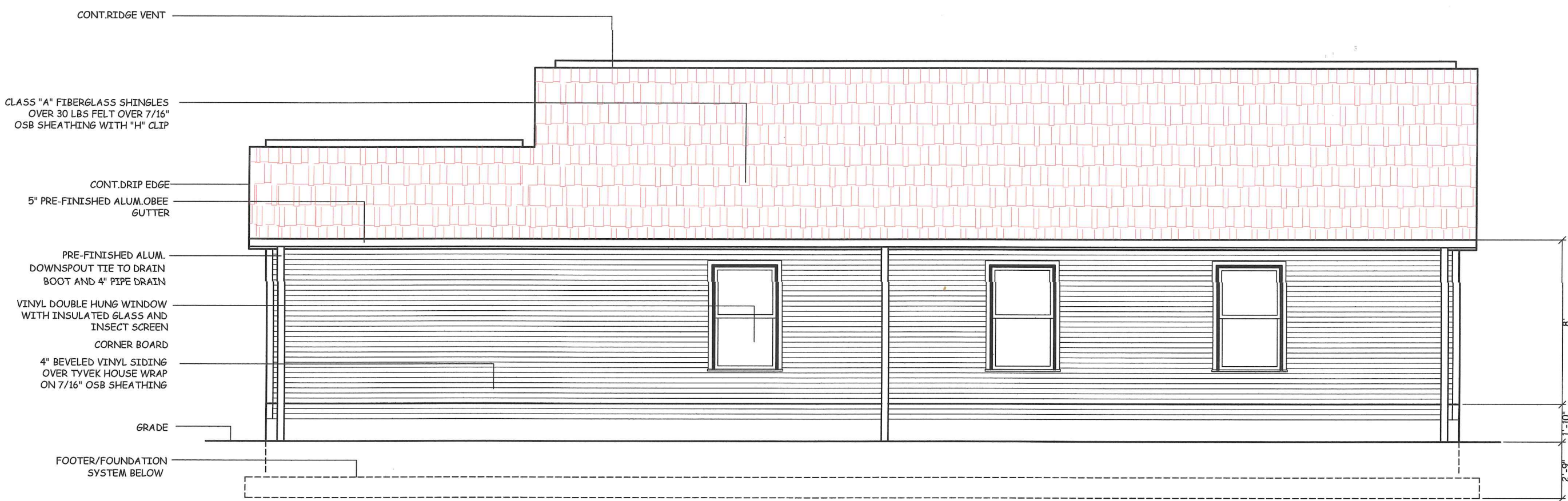
CORNER BOARD

4" BEVELED VINYL SIDING
OVER TYVEK HOUSE WRAP
ON 7/16" OSB SHEATHING

GRADE

FOOTER/FOUNDATION
SYSTEM BELOW

RIGHT SIDE ELEVATION
SCALE: 3/16" = 1'-0"



CONT.RIDGE VENT

CLASS "A" FIBERGLASS SHINGLES
OVER 30 LBS FELT OVER 7/16"
OSB SHEATHING WITH "H" CLIP

CONT.DRIP EDGE

5" PRE-FINISHED ALUM.OBEE
GUTTER

PRE-FINISHED ALUM.
DOWNSPOUT TIE TO DRAIN
BOOT AND 4" PIPE DRAIN

VINYL DOUBLE HUNG WINDOW
WITH INSULATED GLASS AND
INSECT SCREEN

CORNER BOARD

4" BEVELED VINYL SIDING
OVER TYVEK HOUSE WRAP
ON 7/16" OSB SHEATHING

GRADE

FOOTER/FOUNDATION
SYSTEM BELOW

LEFT SIDE ELEVATION
SCALE: 3/16" = 1'-0"

RANDALL C. BURCHETT & ASSOCIATES
ARCHITECT
322 WEST COURT ST. PRESTONSBURG, KENTUCKY 41653
PH. 606.866.3928 FAX. 606.866.0289

KRISS LOWRY & ASSOCIATES
CORINTH, KY
KL-1439ES-REV

SHEET NUMBER

44

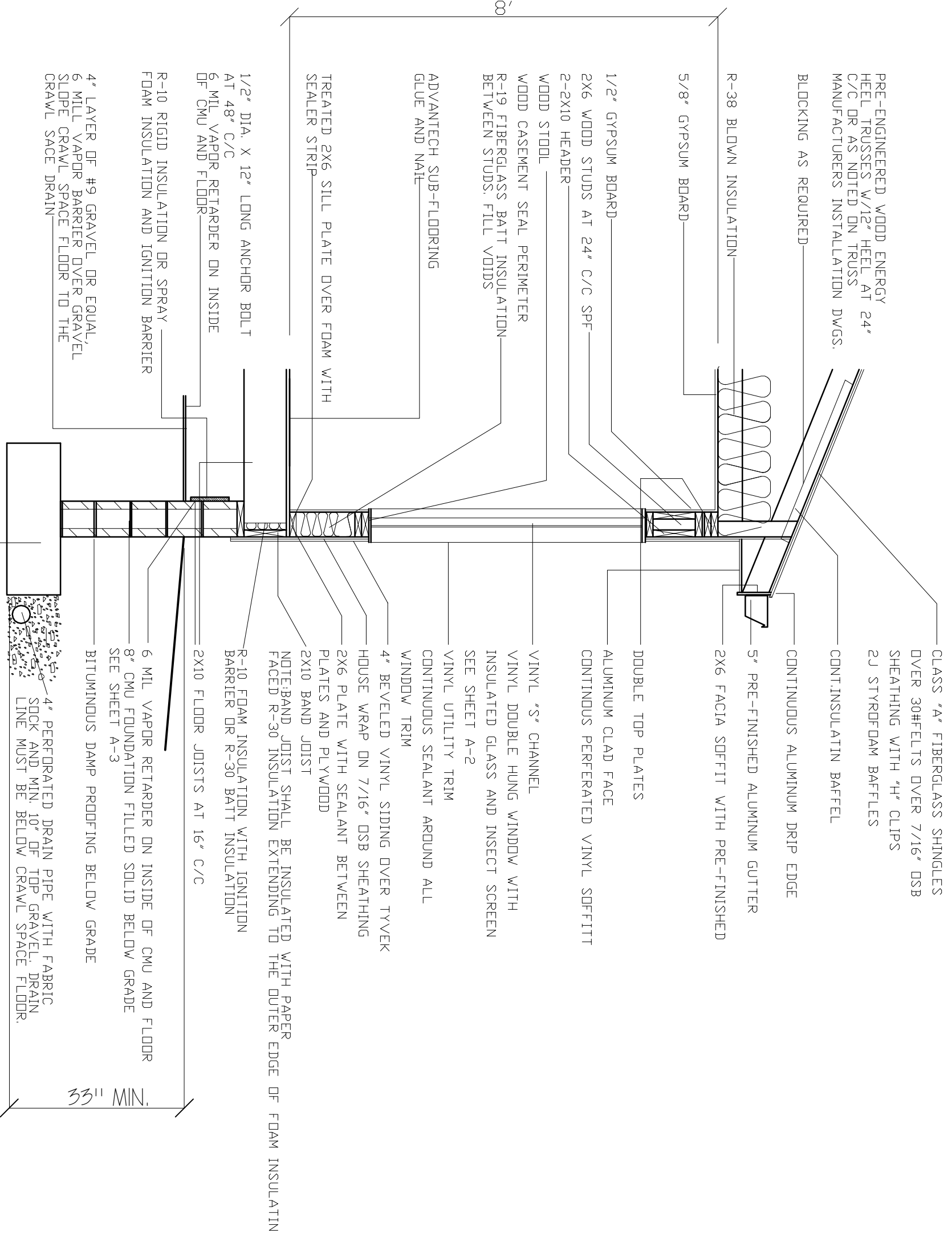
DATE:	12.02.10
REVISED:	02.04.11
REVISED:	10-21-11
REVISED:	
DRAWN BY:	RCB
JOB NO:	ES-A



RANDALL C. BURCHETT & ASSOCIATES
ARCHITECT
233 WEST COURT STREET PRESTONSBURG, KENTUCKY 41653
PH. 606.886.3929 FAX. 606.886.0289

KRISS LOWRY & ASSOCIATES, INC.
CORINTH, KY

SHEET NUMBER



PRE-ENGINEERED WOOD ENERGY
HEEL TRUSSES W/12" HEEL AT 24"
C/C OR AS NOTED ON TRUSS
MANUFACTURERS INSTALLATION DWGS.

BLOCKING AS REQUIRED

R-38 BLOWN INSULATION

5/8" GYPSUM BOARD

1/2" GYPSUM BOARD

2X6 WOOD STUDS AT 24" C/C SPF

2-2X10 HEADER

WOOD STOOD

WOOD CASEMENT SEAL PERIMETER

R-19 FIBERGLASS BATT INSULATION
BETWEEN STUDS. FILL VOIDS

ADVANTECH SUB-FLOORING
GLUE AND NAIL

TREATED 2X6 SILL PLATE OVER FOAM WITH
SEALER STRIP

1/2" DIA. X 12" LONG ANCHOR BOLT
AT 48" C/C

6 MIL VAPOR RETARDER ON INSIDE
OF CMU AND FLOOR

R-10 RIGID INSULATION OR SPRAY
FOAM INSULATION AND IGNITION BARRIER

4" LAYER OF #9 GRAVEL OR EQUAL,
6 MIL VAPOR BARRIER OVER GRAVEL,
SLOPE CRAWL SPACE FLOOR TO THE
CRAWL SPACE DRAIN

CLASS "A" FIBERGLASS SHINGLES
OVER 30#FELTS OVER 7/16" OSB
SHEATHING WITH "H" CLIPS
2J STYROFOAM BAFFLES

CONT. INSULATIN BAFFEL

CONTINUOUS ALUMINUM DRIP EDGE

5" PRE-FINISHED ALUMINUM GUTTER

2X6 FACIA SOFFIT WITH PRE-FINISHED

DOUBLE TOP PLATES

ALUMINUM CLAD FACE
CONTINUOUS PERFERATED VINYL SOFFIT

VINYL "S" CHANNEL

VINYL DOUBLE HUNG WINDOW WITH
INSULATED GLASS AND INSECT SCREEN
SEE SHEET A-2

VINYL UTILITY TRIM
CONTINUOUS SEALANT AROUND ALL
WINDOW TRIM

4" BEVELED VINYL SIDING OVER TYVEK

HOUSE WRAP ON 7/16" OSB SHEATHING
2X6 PLATE WITH SEALANT BETWEEN
PLATES AND PLYWOOD

2X10 BAND JOIST

NOTE: BAND JOIST SHALL BE INSULATED WITH PAPER
FACED R-30 INSULATION EXTENDING TO THE OUTER EDGE OF FOAM INSULATIN

R-10 FOAM INSULATION WITH IGNITION
BARRIER OR R-30 BATT INSULATION

2X10 FLOOR JOISTS AT 16" C/C

6 MIL VAPOR RETARDER ON INSIDE OF CMU AND FLOOR
8" CMU FOUNDATION FILLED SOLID BELOW GRADE
SEE SHEET A-3

BITUMINOUS DAMP PROOFING BELOW GRADE

4" PERFORATED DRAIN PIPE WITH FABRIC
SOCK AND MIN. 10" OF TOP GRAVEL. DRAIN
LINE MUST BE BELOW CRAWL SPACE FLOOR.

CONT. CONCRETE FOOTING REINFORCED WITH (2)
#4 BARS CONT. AND #4 REBAR PERPENDICULAR
@ 4' C/C-SEE FOUNDATION PLAN SHEET A-3

TYPICAL WALL SECTION

SCALE 1/2" = 1'-0"

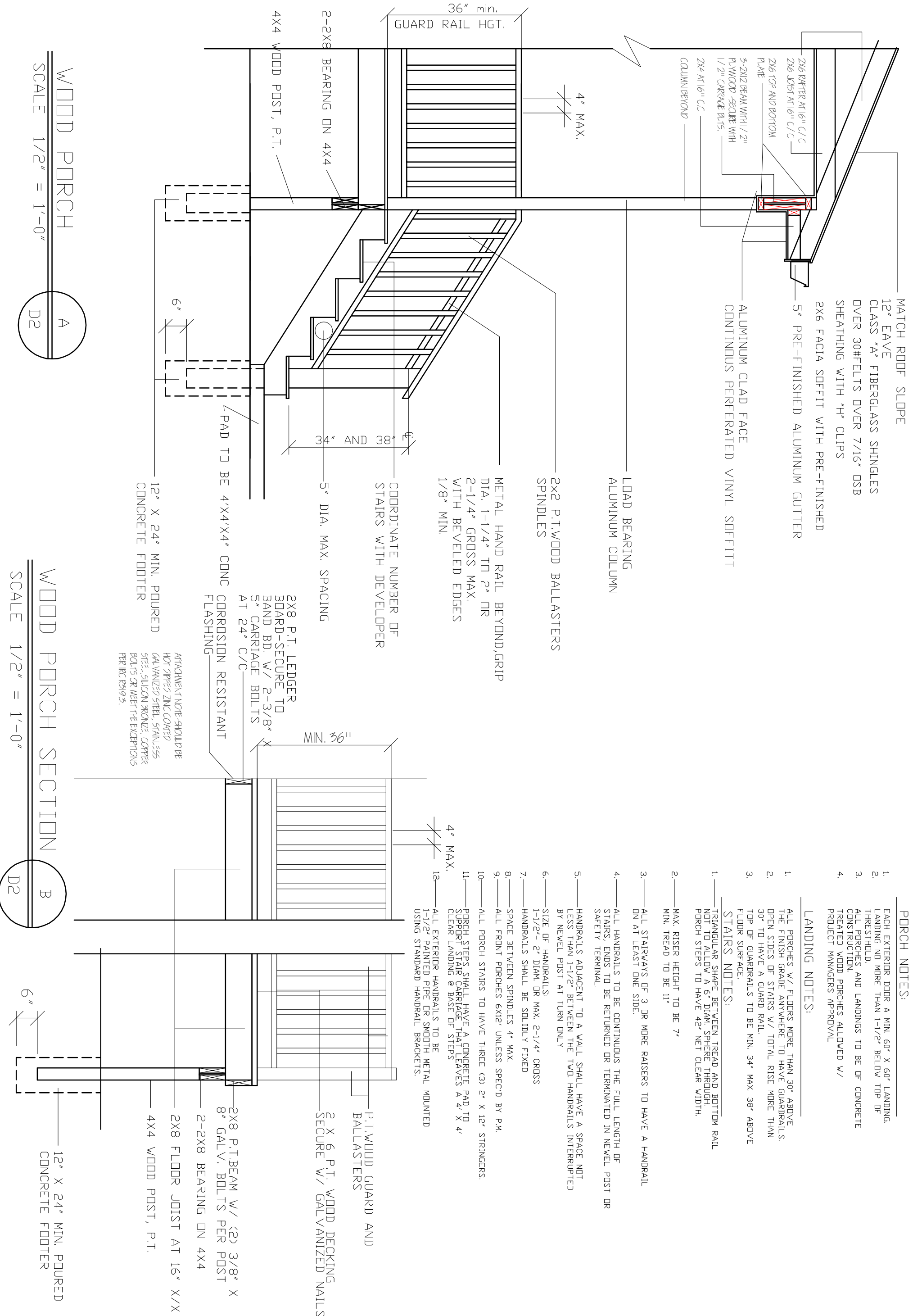
33" MIN.



- PORCH NOTES:**
- EACH EXTERIOR DOOR A MIN. 60" X 60" LANDING. LANDING NO MORE THAN 1'-1/2" BELOW TOP OF THRESHOLD.
 - ALL PORCHES AND LANDINGS TO BE OF CONCRETE CONSTRUCTION.
 - TREATED WOOD PORCHES ALLOWED W/ PROJECT MANAGERS APPROVAL

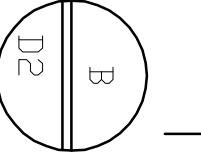
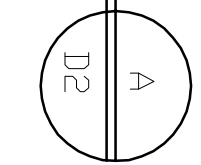
- LANDING NOTES:**
- ALL PORCHES W/ FLOORS MORE THAN 30" ABOVE THE FINISH GRADE ANYWHERE TO HAVE GUARDRAILS. OPEN SIDES OF STAIRS W/ TOTAL RISE MORE THAN 30" TO HAVE A GUARD RAIL.
 - TOP OF GUARDRAILS TO BE MIN. 34" MAX. 38" ABOVE FLOOR SURFACE.

- STAIRS NOTES:**
- TRIANGULAR SHAPE BETWEEN TREAD AND BOTTOM RAIL NOT TO ALLOW A 6" DIAM. SPHERE THROUGH. PORCH STEPS TO HAVE 42" NET CLEAR WIDTH.
 - MAX. RISER HEIGHT TO BE 7" MIN. TREAD TO BE 11"
 - ALL STAIRWAYS OF 3 OR MORE RAISERS TO HAVE A HANDRAIL ON AT LEAST ONE SIDE.
 - ALL HANDRAILS TO BE CONTINUOUS THE FULL LENGTH OF STAIRS. ENDS TO BE RETURNED OR TERMINATED IN NEVEL POST OR SAFETY TERMINAL.
 - HANDRAILS ADJACENT TO A WALL SHALL HAVE A SPACE NOT LESS THAN 1-1/2" BETWEEN THE TWO HANDRAILS INTERRUPTED BY NEVEL POST AT TURN ONLY
 - SIZE OF HANDRAILS:
1-1/2" - 2" DIAM. OR MAX. 2-1/4" CROSS
 - HANDRAILS SHALL BE SOLIDLY FIXED
 - SPACE BETWEEN SPINDLES 4" MAX.
 - ALL FRONT PORCHES 6X12' UNLESS SPEC'D BY P.M.
 - ALL PORCH STAIRS TO HAVE THREE (3) 2" X 12" STRINGERS.
 - PORCH STEPS SHALL HAVE A CONCRETE PAD TO SUPPORT STAIR CARRIAGE THAT LEAVES A 4" X 4" CLEAR LANDING @ BASE OF STEPS
 - ALL EXTERIOR HANDRAILS TO BE 1-1/2" PAINTED PIPE OR SMOOTH METAL MOUNTED USING STANDARD HANDRAIL BRACKETS.



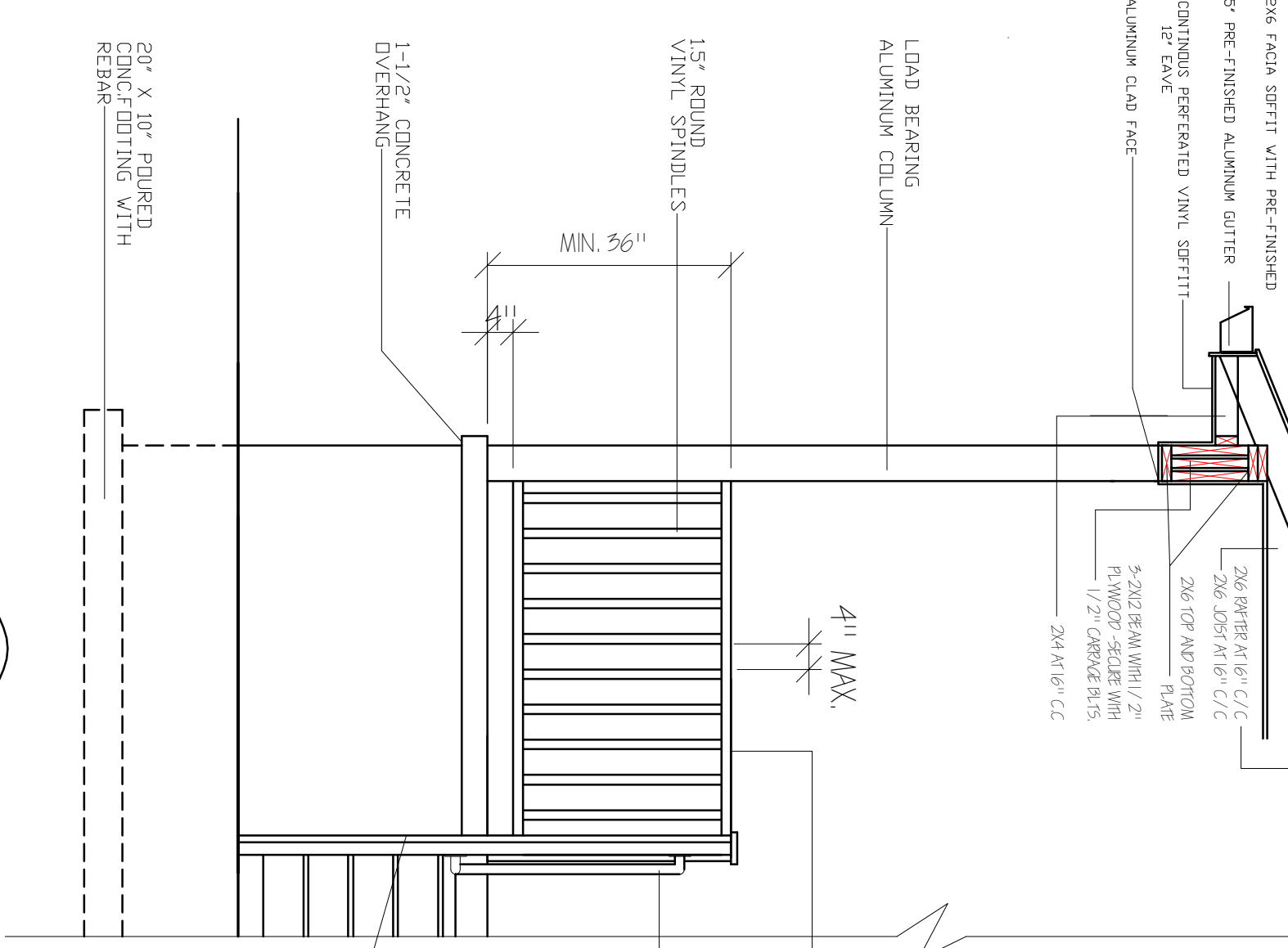
WOOD PORCH
 SCALE 1/2" = 1'-0"

WOOD PORCH SECTION
 SCALE 1/2" = 1'-0"

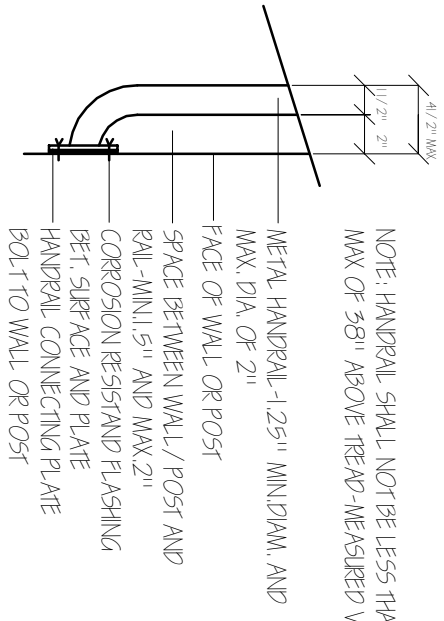


MATCH ROOF SLOPE

CLASS "A" FIBERGLASS SHINGLES
OVER 30HELTS OVER 7/16" OSB
SHEATHING WITH "H" CLIPS



HANDRAIL CONNECTION DETAIL
NT5.



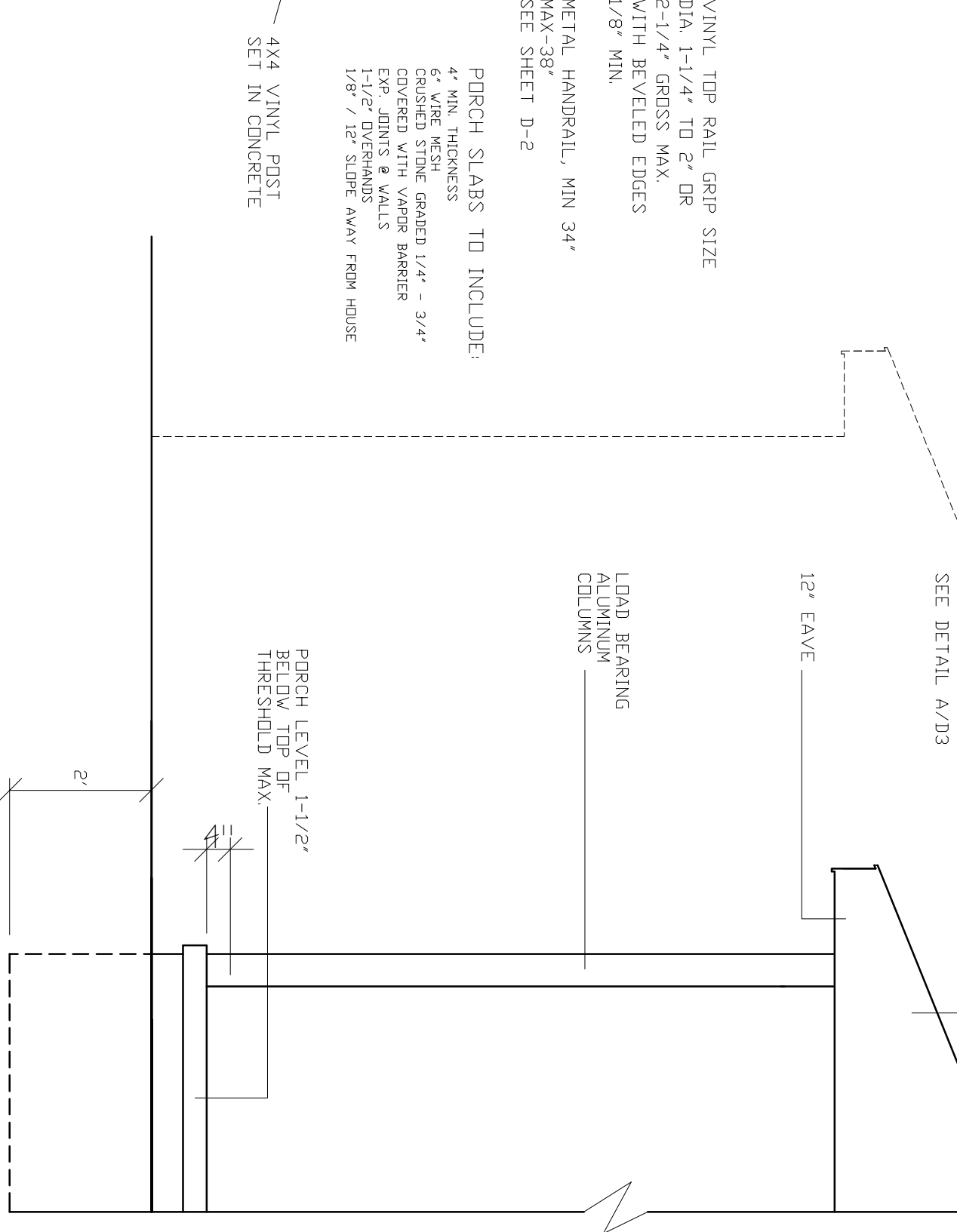
NOTE: HANDRAIL SHALL NOT BE LESS THAN 34" AND
MAX OF 38" ABOVE TREAD - MEASURED VERTICALLY

VINYL TOP RAIL GRIP SIZE
DIA. 1-1/4" TO 2" OR
2-1/4" GROSS MAX.
WITH BEVELED EDGES
1/8" MIN.

METAL HANDRAIL, MIN 34"
MAX-38"
SEE SHEET D-2

PORCH SLABS TO INCLUDE:
4" MIN. THICKNESS
6" WIRE MESH
CRUSHED STONE GRADED 1/4" - 3/4"
COVERED WITH VAPOR BARRIER
EXP. JOINTS @ WALLS
1-1/2" OVERHANDS
1/8" / 12" SLOPE AWAY FROM HOUSE

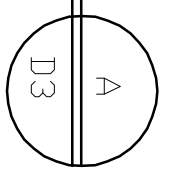
4X4 VINYL POST
SET IN CONCRETE



PORCH LEVEL 1-1/2"
BELOW TOP OF
THRESHOLD MAX.

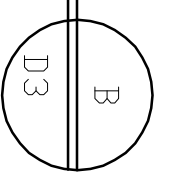
RAISED PORCH SLAB

SCALE 1/2" = 1'-0"



@GRADE PORCH SLAB

SCALE 1/2" = 1'-0"



DATE:	11.11.11
REVISED:	
REVISD:	
REVISD:	
DRAWN BY:	RCB
JOB NO:	ES-A



RANDALL C. BURCHETT & ASSOCIATES
ARCHITECT
233 WEST COURT STREET, PRESTONSBURG, KENTUCKY 41653
PH. 606.886.3929 FAX. 606.886.0289

KRISS LOWRY & ASSOCIATES
CORINTH, KY

SHEET NUMBER

D-3